

Titanium Tribune



3057 N. Main, Suite 2 • Durango, CO 81301
Phone: 970-385-6800 • Fax: 970-385-4620

January- 2011

Practice Limited to Periodontics, Including Dental Implants

Implant Contours

A very important part of the implant restoration is the **emergence profile**.

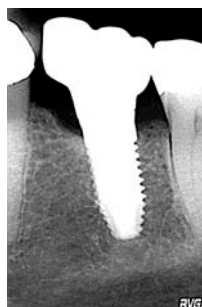
The emergence profile is the contour that the abutment and the restoration create from the implant platform to the contact area.

If the emergence profile is over contoured or under contoured, it can create non cleanable ledges around the implant restoration. Bacteria will build up and cause suppuration, increased pocketing and bone loss.

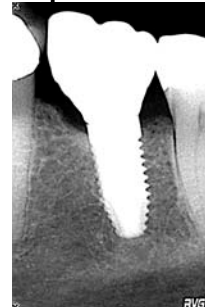
Computer designed abutments can improve the emergence profiles compared to stock abutments.

The case below is an under contoured abutment and restoration that caused a ledge over the tissue, which created a plaque trap, suppuration and a 6 mm pocket. The cause of the under contoured emergence is because the abutment when straight up with no emergence. Below are the under contoured radiograph and a ideal contoured computer altered radiograph.

Under Contoured



Computer Altered to Ideal



The case below is an over contoured restoration. The abutment comes straight out from the implant platform. There is also a plaque trap on this case causing bone loss on the implant.

Over Contoured



Computer Altered to Ideal



Below are idea emergence profiles.
Ideal Emergence Profiles

